

DisplayPort - Console access via IP protocol



Single Head 4K30 or dual head
1920 x 1200 support

Realtime KVM access via 1G IP networks
to Draco tera matrix systems

Compatible with existing Draco tera
installations via Draco tera IP Gateway

Compatible with all
Draco vario chassis solutions

PRODUCT INFORMATION

Access flexibility

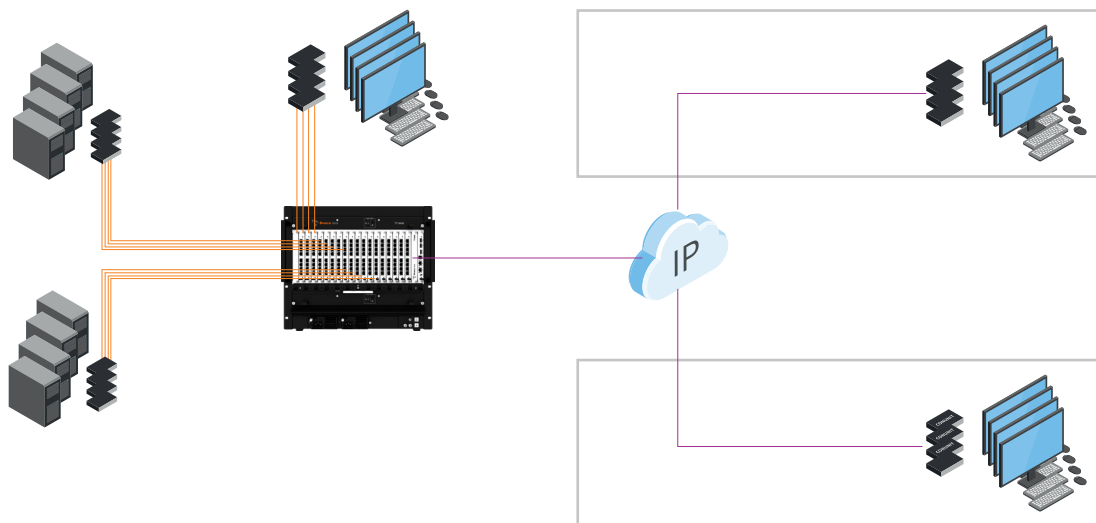
The Draco vario IP Gateway consoles provide seamless integration into Draco tera KVM matrix applications via IP network infrastructure. Instead of using dedicated Cat X or fiber optic links, the new IP based consoles make use of Gigabit Ethernet topologies, allowing a more flexible access to target computers which are attached to KVM matrix switches. KVM connections with up to 4K30 resolutions single head or 1920 x 1200 dual head are supported across 1G IP connections in real-time.

Network simplicity due to hybrid setup

Since the core KVM matrix system is still based on easy to setup proprietary connectivity, it is way easier to provide individual consoles flexible IP access. Requirements on the network infrastructure are a sufficient bandwidth and low latency for maintaining the highest performance. Complexity such as Multicast, IGMP, Jumbo Frames are not to worry about, thanks to the hybrid KVM architecture.

To integrate a Draco vario IP Gateway into an already operational KVM system, users only need a Draco tera enterprise or Draco tera flex matrix switching system with an IP Gateway interface and 1G/10G network infrastructure. This hybrid KVM setup with its mix of proprietary and IP connected endpoints offers completely new levels of flexibility and connectivity.

CONSOLE ACCESS VIA IP TO DRACO TERA MATRICES



DisplayPort - Console access via IP protocol

TECHNICAL DATA

Output	Primary channel: 1x DisplayPort 1.1 Secondary channel: 1x Mini-DisplayPort 1.1	
Audio (embedded)	Stereo Linear Pulse Code Modulation (LPCM), DTS, DTS-HD (5.1), Dolby Digital, Dolby Digital Plus (5.1)	
Service Interface	Mini-USB	
Maximum Resolution	Single head operation (primary channel)	Dual head operation (primary and secondary channel)
	1920 x 1080 @ 120 Hz (reduced blanking) 1920 x 1200 @ 60 Hz (normal blanking) 1920 x 1200 120 Hz (reduced blanking) 2560 x 1440 @ 60 Hz (normal blanking) 3840 x 2160 @ 30 Hz - UHD (reduced blanking) 4096 x 2160 @ 30 Hz - 4k DCI (reduced blanking)	1920 x 1080 @ 60 Hz (reduced blanking) 1920 x 1200 @ 60 Hz (reduced blanking)
Keyboard / mouse	USB-HID	
Optional Interfaces	-	
Maximum transmission range to network switch	Cat X: 140m Single Mode Fiber: 10 km	
Power supply	Power supply via the Draco vario chassis* used.	
Current draw	Max. 1,600 mA per extender module (power input via the Draco vario chassis* used)	
Link Data Rate	1 G	
Abmessungen	20 x 129 x 143 (in mm)	
Dimensions	100g	
Chassis/Mounting Accessories	Suitable Draco vario chassis and mounting accessories under the following link: https://www.ihse.de/products/chassis-accessories/ :	
Updatable	Via Onboard Flash	

* For detailed information, refer to the user manual.

ORDER NUMBERS

Draco vario IP Gateway CON Series 483	Part No:
Draco vario IP Gateway CON module DP 1.1, DH, 4k30 or 2x1080p, USB-HID, Cat X 1G	IP-R483-B2HC
Draco vario IP Gateway CON module DP 1.1, DH, 4k30 or 2x1080p, USB-HID, Fiber LC SM 1G	IP-R483-B2HS